

## **Historic, Archive Document**

Do not assume content reflects current scientific knowledge, policies, or practices.



# VICK'S SPECIAL OFFER

OF

## FLOWER SEEDS and BULBS

For Summer and Early Fall Planting, July, August, Sept., 1920

THIS PRICE LIST CANCELS ALL PREVIOUS PRICES

### HARDY FIELD ROSE GROWN CARNATION PLANTS

We have about thirty thousand extra heavy field-grown Carnation Plants of the following varieties, all healthy, well branched stock. See illustration:

	Per 100	Per 1,000
Beacon, splendid scarlet . . . . .	\$12 50	\$120 00
Harlowarden, best crimson . . . . .	12 50	120 00
Matchless, superb white . . . . .	12 50	120 00
White Enchantress . . . . .	12 50	120 00
Enchantress Supreme . . . . .	15 00	140 00

### ANTIRRHINUM MAJUS (Snapdragon)

	Per oz.	Per lb.
Silver Pink (Special florists' strain) . . . . .	Sold out	\$0 00
New Giant Flowered, White, Brilliant (scarlet, yellow and white), Deep Scarlet, Light Rose, Deep Rose Firefly (scarlet with white throat), Bright Crimson, Striped, Yellow and Yellow Orange Striped, Ruby King, Queen Victoria, large pure white, Pink, Venus . . . . .	¼ oz., 25 cents.	75
New Giant Flowered, choicest mixed . . . . .		50
Tall Varieties, fine mixed . . . . .		30 3 00
Dwarf Mixed, extra choice . . . . .		40 5 00

### ALYSSUM

Carpet of Snow . . . . .	¼ lb., \$1.50	45
Saxatile compactum, "Gold Dust" (Perennial) . . . . .	¼ oz., 20 cts.	90

### BELLIS PERENNIS (Double Daisy)

Snowball, large double pure white . . . . .	¼ oz., 30 cts.	2 00
Longfellow, large double, rosy pink . . . . .	¼ oz., 30 cts.	2 00
Mixed, large double, choicest strain . . . . .	¼ oz., 25 cts.	1 75
Monstrosus Albus, Giant double, white . . . . .	¼ oz., \$1.50	4 50
" Roseus, " " rose . . . . .	¼ oz., 1.50	4 50
" Mixed, rose and white . . . . .	¼ oz., 1.25	4 25
Shasta, Alaska . . . . .	¼ oz., 20 cts.	1 25

### AMPELOPSIS (Hardy Climber)

Veitchii, Boston or Japan Ivy . . . . .	¼ oz., 10 cts.	25
---	----------------	----

### ANCHUSA ITALICA

Dropmore . . . . .	1-32 oz., 10 cts.	1 00
--------------------	-------------------	------

### ASPARAGUS (Greenhouse grown)

	Per oz.	Per lb.
Sprengeri, 100 seeds, 15 cts.; 250 seeds, 35 cts.; 1000 seeds, \$1.00 Plumosus nanus, . . . 100 seeds, 40 cts.; 1000 seeds 3.50		

### CAMPANULA (see also Canterbury Bell)

Carpatica, White . . . . .	¼ oz., 35 cts.	1 00
" Blue . . . . .	¼ oz., 35 cts.	1 00
" Mixed . . . . .	¼ oz., 30 cts.	90
Persicifolia alba . . . . .	¼ oz., 35 cts.	2 00
" Coerulea . . . . .	¼ oz., 35 cts.	2 00

### CANDYTUFT (Iberis)

Rocket, White . . . . .	15	1 00
Empress, Giant White Hyacinth flowered (true) very choice . . . . .	¼ oz., 10 cts.	25 3 00
Carmine . . . . .		25 2 50
Lilac . . . . .		25 2 50
Perennial-Iberis Gibraltarica . . . . .	1-16 oz., 20 cts.	2 00
" " Sempervirens, white . . . . .	1-16 oz., 20 cts.	2 00

### CANTERBURY BELL (Campanula Medium)

Single Light Pink, beautiful . . . . .	¼ oz., 50 cts.	1 75
Single varieties mixed . . . . .	¼ oz., 40 cts.	1 25
Double " " . . . . .	¼ oz., 25 cts.	1 00
Calycanthema, (Cup and Saucer) mixed. . . . .	¼ oz., 30 cts.	1 50

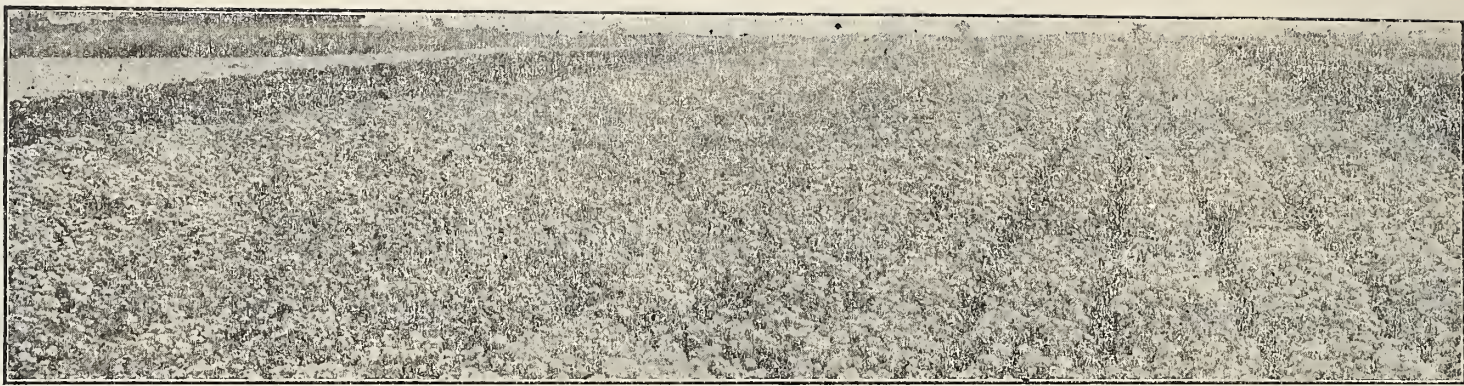
### CARNATION (See Dianthus)

Hardy	Fragrant.	Fine for Cutting	
Extra fine double, mixed. 1-16 oz., 25 cts.; ¼ oz., 35 cts.			2 50
Dwarf, Early-flowering Vienna, extra fine double mixed . . . . .		¼ oz., 35 cts.	1 25
Dwarf, Early-flowering Grenadin, double bright scarlet, extra fine . . . . .		¼ oz., 45 cts.; ¼ oz., 80 cts.	3 00
Marguerite, White . . . . .		¼ oz., 25 cts.	2 00
" Pure yellow . . . . .		¼ oz., 20 cts.	1 25
" Mixed . . . . .		¼ oz., 30 cts.	1 00



Strong well-rooted Carnation plants like this are scarce and the demand is unusually heavy. Our stock will go rapidly. Orders will be filled in rotation as received. Better get yours in early. For prices see top of page.

	Per oz.	Per lb.
Marguerite Giant or Malmaison, mixed extra large-flowered strain . . . . .	¼ oz., 35 cts.	1 75
Chaubands Everblooming . . . . .	¼ oz., 75 cts.	2 00
<b>CLEMATIS PANICULATA</b> White, very prolific . . . . .	¼ oz., 10 cts.	50
<b>COREOPSIS</b> Grandiflora, flowers large golden yellow . . . . .	¼ oz., 25 cts.	
<b>DELPHINIUM (Perennial Larkspur)</b> Delphinium Formosum, dark blue . . . . .	¼ oz., 40 cts.	1 25
" coelestinum, sky blue, . . . . .	¼ oz., 25 cts.	1 75
" nudicaule, dwarf scarlet . . . . .	¼ oz., 20 cts.	2 00
" elatum, fine mixed . . . . .	¼ oz., 25 cts.	75
Chinese, mixed . . . . .		35
Belladonna, best blue, azure blue . . . . .	¼ oz., 50 cts.	3 50
<b>DIANTHUS, Hardy Pink (See also Carnation)</b> Plumarius (Pheasant's Eye) single fine mixed . . . . .	¼ oz., 20 cents.	60
" double and semi-double mixed, . . . . .	¼ oz., 35 cts.	1 00
" semperflorens (Florists perpetual Pinks 1-16 oz., 15 cts. . . . .		1 75
" Cyclops, rose with crimson eye. . . . .	¼ oz., 25 cts.	1 00
<b>DIGITALIS (Foxglove). Hardy</b> Gloxiniiflora, Alba white . . . . .	¼ oz., 25 cts.	75
" Rosea Pink . . . . .	¼ oz., 25 cts.	75
" splendid mixed . . . . .	¼ oz., 20 cts.	60
Vick's Special mixed . . . . .	¼ oz., 25 cts.	75



PICTURE TAKEN THIS SUMMER, SWEET WILLIAM ON VICK SEED FARMS. ONLY SMALL PART OF FIELD IS SHOWN. DO YOU KNOW ANY OTHER PLACE WHERE THEY GROW SUCH CROPS AS THESE? SEE PRICES OF SWEET WILLIAM SEED ON OPPOSITE PAGE.

<b>GAILLARDIA</b>	Per oz.	Per lb.			
Lorenziana fl. pl., saved from very double flowers . . . . .	30	3 50			
Annual varieties, single mixed . . . . .	25	3 00			
Grandiflora, perennial varieties, finest mixed . . . . .	25	2 50			
<b>GYPSOPHILA (Baby Breath)</b>					
Elegans, annual, dwarf, white . . . . . ¼ oz., 10 cts. \$	25				
Paniculata, perennial, white, fine for cutting . . . . .	40	\$3 50			
“ double (true) . . . . .					
<b>HIBISCUS</b>					
Crimson Eye . . . . . ¼ oz., 15 cts.	50				
Moschentas Rose Pink . . . . . ¼ oz., 15 cts.	50				
<b>HOLLYHOCK</b>					
Separate Colors, White, Pink, Crimson, Rose, Scarlet, Yellow, large double . . . . . ¼ oz., 25 cts.	85				
Extra Choice, double mixed. (Our own growing) . . . . .	75				
Mammoth Fringed Allegheny, choice mixed colors . . . . .	50	6 00			
<b>LATHYRUS Grandiflora-Perennial Peas.</b>					
Clusters of rose pink, white and crimson flowers from June to September . . . . . ¼ oz., 15 cts.	50				
<b>LINUM</b>					
Grandiflorum rubrum, scarlet flax, Annual . . . . .	20				
Perennial varieties mixed . . . . . ½ oz., 10 cts.	25				
<b>LUPINUS</b>					
Polyphylus Mixed . . . . . ¼ oz., 10 cts.	30				
<b>LYCHNIS</b>					
Chalcedonica, bright scarlet . . . . . ¼ oz., 20 cts.	40				
Haageana hybrida, fine mixed . . . . . ½ oz., 25 cts.	2 00				
Viscaria splendens, fine scarlet . . . . . ¼ oz., 20 cts.	40				
<b>MYOSOTIS (Forget-me-not).</b>					
“ Alpestris, blue, rose and white . . . . . ¼ oz., 35 cts.	1 00				
“ indigo blue, very fine . . . . . ½ oz., 25 cts.	1 75				
“ robusta grandiflora, (Eliza Fonrobert) ½ oz., 20c.	1 00				
“ Victoria, sky blue, for pots . . . . . ¼ oz., 35 cts.	1 00				
“ mixed . . . . . ¼ oz., 35 cts.	1 00				
Palustris semperflorens . . . . . ½ oz., 65 cts.					
Perfection, extra large . . . . . ½ oz., 50 cts.	3 00				
<b>PLATYCODON</b>					
grandiflorum, blue . . . . . ½ oz., 20 cts.	1 25				
“ white . . . . . ½ oz., 20 cts.	1 25				
<b>POPPY Perennial Varieties</b>					
Excelsior Hybrids of the Oriental Poppy. The result of several years' careful selection. Ranges from the most delicate salmon to deep crimson . . . . . 1-4 oz., 30 cts.	1 00				
Oriental, darkest red, purple spots . . . . . 1-4 oz., 15 cts.	40	4 00			
nudicaule, yellow } Iceland Poppies					
“ white } flower from May to October	1 00				
“ orange } . . . . . 1-4 oz., 35 cts.	1 00				
“ mixed . . . . . 1-4 oz., 25 cts.	75				
<b>PRIMULA</b>					
Auricula, prize mixed . . . . . ½ oz., 20 cts.	2 00				
elatior (Polyanthus), First quality mixed . . . . . ½ oz., 20 cts.	2 00				
“ “ gold laced . . . . . ½ oz., 40 cts.	2 00				
vulgaris true English Primrose . . . . . ½ oz., 40 cts.	2 00				
<b>PYRETHRUM</b>					
roseum hybridum, single mixed . . . . . 1-4 oz., 50 cts.	1 75				
“ “ double “ ½ oz., 60c.; ¼ oz., \$1.00					
Double White Feverfew (Matricaria capensis, ½ oz., 15c.	75				
Golden Feather, (true yellow) . . . . . ½ oz., 10 cts.	50				
<b>RUDEBECKIA Purpurea . . . . . 1-4 oz., 35 cts.</b>	1 25				
<b>SCHIZANTHUS Mized varieties . . . . . 1-4 oz., 15 cts.</b>	50				
“ Wisetonensis, splendid pot plant, 1-32 oz., 15 cts.					
<b>SMILAX Boston (Myrsiphyllum asparagoides) . . . . .</b>	35				
<b>STOKESIA Cyanea, (Cornflower Aster) . . . . . 1-4 oz., 35 cts.</b>	75				
<b>STOCK Winter Flowering, Ten Weeks</b>					
White. 1-32 oz., 25 cts.; ½ oz., 40 cts.; 1-4 oz., \$0 60	2 00				
Carmine Rose . . . . . ½ oz., 40 cts.; 1-4 oz.,	60	2 00			
Blood Red . . . . . ½ oz., 40 cts.; 1-4 oz.,	60	2 00			
Snow Flake . . . . . ½ oz., 40 cts.; 1-4 oz.,	60	2 00			
Princess Alice (White) . . . . . ½ oz., 40 cts.; 1-4 oz.,	60	2 00			
All colors mixed . . . . . ½ oz., 30 cts.; 1-4 oz.,	50	1 75			
Largest Flowering Dwarf Pyramidal . . . . . 1-4 oz.,	60	2 00			
“ . . . . . ½ oz., 40 cts.					
<b>Beauty of Nice, Early Large Flowering</b>					
Flesh Pink . . . . . ½ oz., 50 cts.; 1-4 oz.,	75	2 50			
Giant White (Mont Blanc) ½ oz., 50 cts.; 1-4 oz.,	75	2 50			
Giant Yellow . . . . . ½ oz., 50 cts.; 1-4 oz.,	75	2 50			
Giant Crimson . . . . . ½ oz., 50 cts.; 1-4 oz.,	75	2 50			
Queen Alexandria, rosy lilac ½ oz., 50 cts.; 1-4 oz.,	75	2 50			
Mixed . . . . . ½ oz., 40 cts.; 1-4 oz.,	60	2 00			
<b>Dresden Perpetual</b>					
Empress Augusta Victoria. ½ oz., 40 cts.; 1-4 oz.,	60	2 00			
Rose . . . . . ½ oz., 40 cts.; 1-4 oz.,	60	2 00			
Blue . . . . . ½ oz., 40 cts.; 1-4 oz.,	60	2 00			
Blood Red . . . . . ½ oz., 40 cts.; 1-4 oz.,	60	2 00			
Yellow . . . . . ½ oz., 40 cts.; 1-4 oz.,	60	2 00			
Mixed . . . . . ½ oz., 30 cts.; 1-4 oz.,	50	1 50			
<b>EARLY or WINTER FLOWERING SPENCER SWEET PEAS</b>					
Sweet Peas sown in Greenhouses need more care in planting than those sown in the open ground in order to prevent damping off. Sow very thinly and thin out to about three inches in the row. It is best to sow the tender varieties, such as whites and light pinks, in sand and transplant. Sow ninety to one hundred days ahead of the time that you want the bloom. For Christmas blooming the seeds should be sown about the middle or latter part of September.					
Items marked with star (*) will be ready for delivery in October, subject to crop conditions.					
	Per oz.	¼ lb.	1 lb.		
*Asta Ohn. Fine lavender. Same form as late flowering Asta Ohn . . . . .	\$0 75	\$2 50	\$ 8 00		
*Blanche Ferry. Pink and white. Standards bright crimson, wings white, tinted pink . . . . .	75	2 50	8 00		
*Cream. A Primrose Spencer of fine shape and size. Similar to late flowering Dobbins Cream . . . . .	75	2 50	8 00		
Heather Bell. Rich lavender mauve. Flowers are very large, born in threes and fours, long stems . . . . .	75	2 50	8 00		
*Liberty. Brilliant crimson, good form and size . . . . .	75	2 50	8 00		
Lavender Pink. Large flowers born in threes and fours on long stems . . . . .	75	2 50	8 00		
*Melody. Rose pink on white ground . . . . .	75	2 50	8 00		
*Morning Star. Orange scarlet, flame color standard with orange pink wings . . . . .	75	2 50	8 00		
*Mrs. A. A. Skatch. Clear pink one of the best of the pink Spencers . . . . .	75	2 50	8 00		
*Rose Queen. Unusually long stem, large flowered, rose pink . . . . .	1 00	3 00	10 00		
Snow Flake. Magnificent early white, a superb form, three or four flowers on long stems . . . . .	75	2 50	8 00		
*Song Bird. Pale rose pink with white ground. Flowers profusely, long stems . . . . .	75	2 50	8 00		
Spring Maid. Crimson pink. A very beautifully shaded flower, strong grower, long stem, prolific . . . . .	75	2 50	8 00		
*Venus. Standards white, slightly flesh pink, very fragrant . . . . .	75	2 50	8 00		
*Warbler. Extra large beautifully formed, rich mauve purple . . . . .	75	2 50	8 00		
*Yarrawa. Best Spencer form. Bright rose pink with light wings . . . . .	75	2 50	8 00		

## VICK'S SELECTED FLORISTS' STRAIN OF PANSY SEED

Packet, 25 cents; 1/8 ounce, 75 cents.

Giant	1/4 oz.	Per oz.
Emperor, blue, purple eye . . . . .	\$1 25	\$3 75
Golden Queen, pure yellow, extra fine . . . . .	1 25	3 75
King of the Blacks, extra fine strain . . . . .	1 25	3 75
Lord Beaconsfield, purple-violet, shading to white . . . . .	1 25	3 75
Madam Perret, extra large flowers, rose, crimson shades . . . . .	1 25	3 75
Premier Lloyd George, formerly Prince Bismarck, light brown shades, with dark eye, fine . . . . .	1 25	3 75
Marshall Foch, formerly Prince Henry, new darkest blue extra large . . . . .	1 25	3 75
Snowflake, extra fine pure white . . . . .	1 25	3 75
Yellow, with dark eye . . . . .	1 00	3 25
White, with purple eye . . . . .	1 00	3 25
Choice Giant Flowered, mixed varieties . . . . .	85	2 75
<b>Masterpiece.</b> New class of Giant Blotched varieties, fine rich colors . . . . . 1-16 oz., 50 cts.; 1/8 oz., 85 cts.	1 25	5 00
<b>Vick's Giant Superb</b> , mixed, Florists' choicest strain . . . . . 1-32 oz., 50 cts.; 1-16 oz., 85 cts.; 1/8 oz., \$1.50	2 50	8 00
<b>Vick's Peerless</b> mixed, contains some of the best American varieties . . . . . 1-32 oz., 30c.; 1-16 oz., 50c.; 1/8 oz., 75c.	1 25	4 00
<b>Standard varieties</b> mixed . . . . .		90
<b>Good Mixture</b> , from trials . . . . .		75

### MASTODON PANSIES

1-16 oz., 65c.; 1/8 oz., \$1.00; 1-4 oz., \$2.00; 1/2 oz., \$3.75; 1 oz., \$7.00.

A new superb strain of Mammoth Pansies. American grown.

**Mastodon mixed.** A wonderful collection of mixed shades in many colors of mammoth size on long stems.

**Adonis, Mastodon.** New, of huge size, light blue, baby blue and lavender shades.

**Bronze Mastodon.** Very large. All the different shades from burnished brass to gold, wonderfully tinged with nearly every color known to pansies.

**Parisian Yellow.** A pure yellow of the grandest form and size.

**White Mastodon (dark center).** The largest pansies we have ever seen.

### PREPARING BED FOR GERMINATING SEED

If your soil is not of the quality of first-class potting soil prepare your bed for sowing as follows:

- 1—Have your ground perfectly clean and free of weeds and trash, pulverized to a depth of six or more inches.
- 2—On the level surface spread evenly a layer of pulverized manure, barnyard scrapings preferred, to a depth of at least one inch.
- 3—Overlay manure with half inch of the best soil you have, thoroughly pulverized.
- 4—Roll or rake down and tamp surface true and smooth.
- 5—Use the hose freely and soak down the bed several inches.
- 6—Sow your seed in drills or broadcast—we sow broadcast.
- 7—Cover as lightly as possible with your best soil or sand. Sand is best.
- 8—Use spray of water to moisten surface.
- 9—Allowing plenty of ventilation, keep your beds moist, quite moist, but not soaking wet, until plants come up.

We use unbleached sheeting, cheapest grade, to retain moisture. As soon as plants begin to come through freely we remove sheeting permanently, and sift top of beds with thin layer of barnyard scrapings.

Never allow your beds to become dry. Any dryness after seeds sprout is absolutely fatal. These directions are for sowing in the open field, but will apply when using flats or cold frames. We use 60 to 75 feet to sow an ounce of seed.

### PREPARING BED FOR RESETTING PLANTS

Too much cultivation and preparation of the soil before making your beds for seedlings or re-set plants is impossible. Too little cultivation and preparation is common and almost fatal to any degree of success. Excellent drainage is essential. For re-sets the soil should be broken up to a depth of ten to twelve inches and thoroughly pulverized to a depth of six to eight inches.

Make your beds four to five feet wide. Cover beds with a mulching of dairy yard or stock yard scrapings, or any well rotted, pulverized manure to a depth of 1 1/2 inches. Set your seedlings deeply, and in rows across the bed seven to eight inches apart, so that you can use the hoe. For marketing purposes set plants 2 1/2 to 3 inches apart in the row: For display beds double space in the row. Never allow top of soil to become packed. After a rain or after watering beds, use the hoe. But don't hoe deep—cultivate surface only. Keep away from shade of trees and buildings as much as possible.

## SWEET WILLIAM

	1/4 oz.	1 oz.	1 lb.
Holborn Glory, extra large flowers, oculata marginata	\$ 30	\$ 30	\$3 00
Dunnett's dark crimson . . . . .		30	3 00
Double White . . . . .	50	1 50	
Single White . . . . .		30	3 00
Double, finest mixed . . . . .		60	7 00
Single, finest mixed . . . . .		20	2 00
Pink Beauty . . . . .	30	1 00	
Scarlet Beauty . . . . .	30	1 00	

### HURRY UP THAT ORDER FOR FALL BULBS

If you have not already provided for at least a portion of your requirements for fall bulbs, better do so now and take advantage of the lowest possible prices. If you are going to need a considerable quantity, send us your list at once and we may be able to save you money by cabling the order and including the bulbs with some of our regular import shipments.

One thing is certain; there are going to be more bulbs sold this fall than ever before. Although we have more bulbs coming to us than we have ever had before, we have already received advance orders to take a good share of them. It is therefore wise for you to place your order at once not only to secure the best prices, but to make sure that you receive just the varieties which you require.

We are very enthusiastic over our splendid list of varieties which we have to offer this fall. It will be a pleasure for us to send you this list with prices. We have discarded all kinds that do not show some distinctive merit and are offering many new varieties at extremely attractive prices. It will pay you to sit down now and write us for further particulars.

Fall Bulbs will be a very safe crop to plan on this winter. In case of a coal shortage there is much less risk of damage than with any other kind of flowers. They require heat only when they are ready to be forced into bloom and then only for a short time. If buried outside in flats, covered with leaves, straw litter and boards, or dirt, they may be dug out during the coldest weather and brought into heat, when they will bloom in a very short time.



# Bulbs For Forcing

The prices on bulbs are based on the safe arrival of stock in this country and our liability is limited to the refund of purchase price in case of nonarrival.

## FREESIA PURITY

This variety has taken the place of Freesia Refracta Alba and is far superior to it. These bulbs can easily be brought into bloom for Christmas by early planting and always find ready sale. The stock that we handle is a superior, well selected strain of fully matured bulbs that are sure to bloom under normal conditions.

First size, per doz., 35 cts.; per 100, \$1.50; per 1,000, \$12.00.  
Extra choice, per doz., 50 cts.; per 100, \$1.75; per 1,000, \$14.00.

## CALLA LILLIES—Dry Bulbs

Owing to the shortage of the other Lily stocks there is bound to be a tremendous demand for Calla Lily bulbs. Our bulbs are apparently free from disease, sound and well ripened. Bulbs secured from this grower have always produced more flowers for the size of the bulb planted than bulbs we have secured from any other source. Supply is limited and orders will be filled in the order in which they are received.

1½ to 2 inch bulbs, per doz., \$2.25; per 100, \$15.00.  
2 to 2½ " " " " 3.50; " 100, 25.00.

## LILIUM HARRISII

Can be brought into bloom earlier than other lilies except cold storage stock. This is the original Easter Lily. Our bulbs came direct from one of the best growers on the island of Bermuda. Bulbs are sound and free from disease. This strain of lilies has become very scarce and the prices are high, but with the stock so limited there is never enough to take care of the demand. 7 to 9 inch bulbs, per doz., \$4.50; per 100, \$30.00.

## LILIUM FORMOSUM

This is a splendid pure white, free flowering Lily of the Longiflorum type, imported by us from the Island of Formosa. The Formosum can be forced into bloom earlier than any other Lily of its type except Harrisii, for which it is a good substitute.

6 to 8 inch bulbs, per doz. \$3.00; per 100, \$20.00.  
7 to 9 " " " " 4.50; " 100, 30.00.  
8 to 10 " " " " 5.00; " 100, 35.00.

## LILIUM GIGANTEUM—Blue Stem

The best of the Japan Lilies. A little later than the other varieties, but hardier and freer blooming. Bulbs can be put in cold storage and taken out as needed during the Winter and Spring.

6 to 8 inch. Good size for forcing. Per doz., \$2.00; per 100, \$15.00.  
7 to 9 inch. Extra fine, very popular. " " 3.00; " 100, 20.00.  
8 to 10 inch. For use where large number of blossoms per stalk is desired. Per doz., \$4.00; per 100, \$25.00.



## NARCISSUS PAPER WHITE GRANDIFLORA

Superior in every way to the ordinary Paper White. Very popular for forcing. Can be brought into flower in about 30 to 40 days. Will do well in ordinary house temperature and with no special care. For growing in shallow dishes in pebbles and water they are superior to Chinese Lilies. Flowers are larger, more attractive in color and possess a more pleasing fragrance.

Pure white, 13 centimetres or over, per 100, \$2.25; per 1,000, \$20.00.

## LILIUM CANDIDUM

This variety is sometimes called the Annunciation Lily, or Madonna Lily. Good for forcing, also used for outdoor planting. Its snowy-white flowers are borne aloft by long slender stems. Unsurpassed in stateliness and beauty for outdoor culture.

Large size bulbs, per doz., \$1.75; per 100, \$12.00. Extra size bulbs per doz., \$2.25; per 100, \$15.00. Mammoth size bulbs, per doz., \$2.50; per 100, \$18.00.

## JAMES VICK'S SONS

Seedsman, Nurserymen, Florists

ROCHESTER, N. Y.

"The Flower City"

1 CENT  
PAID  
Rochester, N. Y.  
Permit No. 29

This space for address only

1261  
United States Dept of Agri.  
Bureau of Plant Industry  
Washington, D. C.